

**PROGRESS®**

Est. 1931

**SHIMMER  
HAND MIXER**

Instruction manual

# PROGRESS®

Est. 1931

Please read all of the instructions carefully and retain for future reference.

## **Safety Instructions**

When using electrical appliances, basic safety precautions should always be followed.

Check that the voltage indicated on the rating plate corresponds with that of the local network before connecting the appliance to the mains power supply.

Children aged from 8 years and people with reduced physical, sensory or mental capabilities or lack of experience and knowledge can use this appliance, only if they have been given supervision or instruction concerning use of the appliance in a safe way and understand the hazards involved.

Children should be supervised to ensure that they do not play with the appliance.

Unless they are older than 8 and supervised, children should not perform cleaning or user maintenance.

This appliance is not a toy.

This appliance contains no user serviceable parts. If the power supply cord, plug or any part of the appliance is malfunctioning, or if the appliance has been dropped or damaged, only a qualified electrician should carry out repairs. Improper repairs may place the user at risk of harm.

Keep the appliance and its power supply cord out of the reach of children.

Keep the appliance out of the reach of children when it is switched on or cooling down.

Keep the appliance and its power supply cord away from heat or sharp edges that could cause damage.

Keep the appliance away from other heat emitting appliances.

Keep hands, fingers, hair and any loose clothing away from the rotating tools of the appliance.

Do not immerse the electrical components of this appliance in water or any other liquid.

Do not operate the appliance with wet hands.

Do not leave the appliance unattended whilst connected to the mains power supply.

Do not remove the appliance from the mains power supply by pulling the cord; switch it off and remove the plug by hand.

Do not pull or carry the appliance by its power supply cord.

Do not use the appliance if it has been dropped, if there are visible signs of damage or if it is leaking.

Do not use the appliance for anything other than its intended use.

Do not use any attachments other than those supplied.

Do not use any damaged attachments.

Do not use this appliance outdoors.

Do not store the appliance in direct sunlight or in high humidity conditions.

Do not touch any moving parts on this appliance during use, as this could cause injury.

Do not touch any sections of the appliance that may become hot during use, as this could cause injury.

Do not cover the air vents during use, as this may cause the appliance to overheat.

Do not use broken or loose attachments.

Switch off the appliance and disconnect it from the mains power supply before changing or fitting attachments.

Always unplug the appliance after use and before any cleaning or user maintenance.

Always ensure that the appliance has cooled fully after use before performing any cleaning or maintenance.

Use of an extension cord with the appliance is not recommended.

This appliance should not be operated by means of an external timer or separate remote control system, other than that supplied with this appliance.

This appliance is intended for domestic use only. It should not be used for commercial purposes.

# PROGRESS®

Est. 1931

## Care and Maintenance

**STEP 1:** Switch off and unplug the hand mixer from the mains power supply before performing any cleaning or user maintenance.

**STEP 2:** Wipe the hand mixer motor unit with a soft, damp cloth and allow to dry thoroughly.

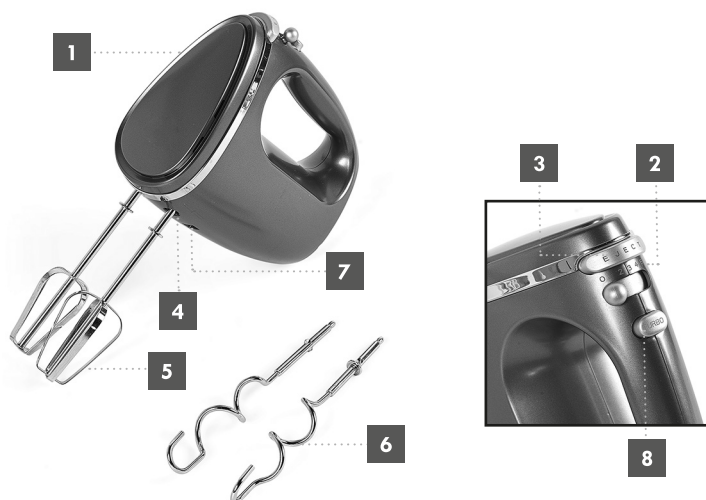
**STEP 3:** Wash all of the attachments in warm, soapy water, then rinse and dry thoroughly.

Do not immerse the hand mixer motor unit in water or any other liquid. Do not use harsh or abrasive detergents or scourers to clean the hand mixer, as this could cause damage.

The hand mixer is not suitable for use in a dishwasher.

**NOTE:** The hand mixer should be cleaned after each use.

## Description of Parts



1. Hand Mixer motor unit
2. 5-speed selector switch
3. Attachment eject button
4. Attachment slots

5. Whisk attachments
6. Dough hook attachments
7. Air vents
8. Turbo button

## Instructions for Use

### Before First Use

Wash all of the attachments in warm, soapy water, then rinse and dry thoroughly. Wipe the hand mixer motor unit with a soft, damp cloth and allow to dry thoroughly. Do not immerse the mixer motor unit in water or any other liquid.

**NOTE:** When using the mixer for the first time, a slight odour may be emitted. This is normal and will soon subside. Allow for sufficient ventilation around the mixer.

### Using the Hand Mixer

All attachments must be securely fitted before use; do not attempt to remove them until the attachment has stopped moving.

**WARNING:** Max. operation time is 3 minutes. Allow to cool for 2 minutes before using the mixer again.

### With the Whisk Attachments

The whisk attachments are ideal for mixing light ingredients such as egg whites, cream and instant desserts. To avoid spillage, it is best to start slowly and build up to the required speed one setting at a time.

**STEP 1:** Before connecting the hand mixer to the mains power supply, carefully attach the whisk attachments onto the hand mixer by aligning the tabs, and pushing in until they click into place.

**STEP 2:** Place the food to be whisked into a mixing jug or bowl, then plug in and switch on the hand mixer at the mains power supply.

**STEP 3:** With the whisk attachments secure, lower them into the mixing jug or bowl and then move the 5-speed selector switch to the desired speed setting.

**STEP 4:** Slowly move the hand mixer in a clockwise direction to avoid splashing. Once whisking is complete, move the 5-speed selector switch back to '0' to switch off the hand mixer.

**STEP 5:** After use, unplug the mixer and remove the whisk attachments by gently pulling them outwards whilst holding down the eject button. Do not press the eject button without holding the attachments, as they may drop.

**NOTE:** Whilst mixing liquid, especially hot liquid, use a tall container or whisk small quantities at a time to reduce spillage, splattering and the possibility of injury from scalding.

**WARNING:** Do not use the whisk attachment to blend very hot or boiling liquid, as this may cause injury.

Switch off and unplug from the mains power supply before attempting to remove the whisk attachments and before cleaning.

## With the Dough Hook Attachments

The dough hook attachments are ideal for mixing bread dough. Ensure that the dough is not too dry to ensure that the dough hooks can work correctly. Dough hooks work best on a lower speed setting.

**STEP 1:** Before connecting the hand mixer to the mains power supply, carefully attach the dough hook attachments onto the hand mixer by aligning the tabs, and pushing in until they click into place.

**STEP 2:** Place the food to be kneaded into a mixing jug or bowl, then plug in and switch on the hand mixer at the mains power supply.

**STEP 3:** With the dough hook attachments secure, lower them into the mixing jug and then move the 5-speed selector switch to the desired speed setting.

**STEP 4:** Slowly move the hand mixer in a clockwise direction to avoid splashing. Once kneading is complete, move the 5-speed selector switch back to '0' to switch off the hand mixer.

**STEP 5:** After use, unplug the mixer and remove the dough hook attachments by gently pulling them outwards whilst holding down the eject button. Do not press the eject button without holding the attachments, as they may drop.

**NOTE:** Whilst mixing liquid, especially hot liquid, use a tall container or dough hook small quantities at a time to reduce spillage, splattering and the possibility of injury from scalding.

**WARNING:** Do not use the hand mixer attachment to blend very hot or boiling liquid, as this may cause injury.

Switch off and unplug from the mains power supply before attempting to remove the dough hook attachments and before cleaning.

## Turbo Button

The turbo button is located above the 5-speed selector switch. Press and hold this to activate the highest speed setting; it can also be used to activate a burst of increased mixing speed whilst a different mixing speed is active.

**NOTE:** The hand mixer must be switched on for the turbo button to be used. If the switch is set to '0', the turbo button will not activate.

## Troubleshooting

Problem	Possible Cause	Solution
The hand mixer will not operate.	The hand mixer is not connected to the mains power supply.	Plug in and switch on the hand mixer at the mains power supply.
The attachments will not move when in contact with ingredients.	The mixture is too dry.	Add liquid to the mixture.

## Storage

Check that the hand mixer is cool, clean and dry before storing in a cool, dry place.  
Never wrap the cord tightly around the hand mixer; wrap it loosely to avoid causing damage.

## Specifications

Product code: EK4249P

Input: 220–240 V ~ 50/60 Hz

Output: 300 W

# PROGRESS®

Est. 1931

## Connection to the Mains

Please check that the voltage indicated on the product corresponds with your supply voltage.

### Important

As the colours in the mains lead of this appliance may not correspond with the coloured markings identifying the terminals in your plug, please proceed as follows:

The wires in the mains lead are coloured in accordance with the following code:

**Blue Neutral (N)**

**Brown Live (L)**

**Green/Yellow Earth ( $\perp$ )**

**FOR UK USE ONLY** – Plug fitting details (where applicable).

The wire coloured **BLUE** is the **NEUTRAL** and must be connected to the terminal marked N or coloured **BLACK**.

The wire coloured **BROWN** is the **LIVE** wire and must be connected to the terminal marked L or coloured **RED**.

The wire coloured **GREEN/YELLOW** must be connected to the terminal marked with the letter E or marked  $\perp$ .

On no account must either the **BROWN** or the **BLUE** wire be connected to the **EARTH** terminal ( $\perp$ ).

Always ensure that the cord grip is fastened correctly.

The plug must be fitted with a fuse of the same rating already fitted and conforming to BS 1362 and be ASTA approved.

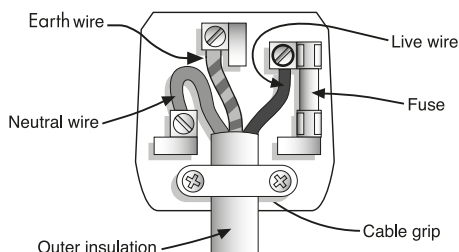
If in doubt, consult a qualified electrician who will be pleased to do this for you.

### Non-Rewireable Mains Plug

If your appliance is supplied with a non-rewireable plug fitted to the mains lead and should the fuse need replacing, you must use one that is ASTA approved (conforming to BS 1362 of the same rating).

If in doubt, consult a qualified electrician who will be pleased to do this for you.

If you need to remove the plug, **DISCONNECT IT FROM THE MAINS**, then cut it off the mains lead and immediately dispose of it safely. Never attempt to reuse the plug or insert it into a socket outlet as there is a danger of an electric shock.





**UP Global Sourcing UK Ltd.,  
UK. Manchester OL9 0DD.  
Germany. 51149 Köln.**

If this product does not reach you in an acceptable condition please contact our Customer Services Department at **[www.progresscookshop.com](http://www.progresscookshop.com)**

Please have your delivery note to hand as details from it will be required. If you wish to return this product, please return it to the retailer from where it was purchased with your receipt (subject to their terms and conditions).

### **Guarantee**

All products purchased as new carry a manufacturer's guarantee; the time period of the guarantee will vary dependent upon the product. Where reasonable proof of purchase can be provided, Progress will provide a standard 12 month guarantee with the retailer from the date of purchase. This is only applicable when products have been used as instructed for their intended, domestic use. Any misuse or dismantling of products will invalidate any guarantee.

Under the guarantee, we undertake to repair or replace free of any charge any parts found to be defective. In the event that we cannot provide an exact replacement, a similar product will be offered or the cost refunded. Any damages from daily wear and tear are not covered by this guarantee, nor are consumables such as plugs, fuses etc.

Please note that the above terms and conditions may be updated from time to time and we therefore recommend that you check these each time you revisit the website.

Nothing in this guarantee or in the instructions relating to this product excludes, restricts or otherwise affects your statutory rights.

### **Disposal of Waste Batteries and Electrical and Electronic Equipment**



This symbol on the product, its batteries or its packaging means that this product and any batteries it contains must not be disposed of with household waste. Instead, it is the user's responsibility to hand this over to an applicable collection point for the recycling of batteries and electrical and electronic equipment. This separate collection and recycling will help to conserve natural resources and prevent potential negative consequences for human health and the environment due to the possible presence of hazardous substances in batteries and electrical and electronic equipment, which could be caused by inappropriate disposal. Some retailers provide take-back services which allow the user to return exhausted equipment for appropriate disposal. **It is the user's responsibility to delete any data on electrical and electronic equipment prior to disposal.** For more information about where to drop batteries, electrical and electronic waste off, please contact the local city/municipality office, household waste disposal service, or the retailer.

# PROGRESS®

Est. 1931

\*To be eligible for the extended guarantee,  
go to **guarantee.upgs.com/progress/** and register your  
product within 30 days of purchase.

Find us on 

[www.facebook.com/ProgressCookshop](http://www.facebook.com/ProgressCookshop)

Manufactured by:  
UP Global Sourcing UK Ltd.,  
**UK.** Manchester OL9 0DD.  
**Germany.** 51149 Köln.

MADE IN CHINA.

[www.progresscookshop.com](http://www.progresscookshop.com)

©Progress trademark. All rights reserved.



CD170720/MD000000/V1