



NOTE: Ingredients can be added whilst the blender is in operation via the filler lid. Twist the filler lid and pull away from the plastic jug to remove. When mixing liquid, use a tall container or blend small quantities at a time to reduce spillage and splattering. The blender will not operate if the plastic jug and plastic jug lid are not correctly locked into place. Ensure all tabs are aligned and locked before use.



WARNING: Maximum operation time is 1 minute. Allow to cool for 3 minutes before using the blender again.

Troubleshooting

Problem	Solution
The blender is not working.	Ensure the blender is plugged into the mains power supply. Make sure that the plastic jug and lid are fully secured in place.
The drink contains lumps.	Reduce the amount of solid ingredients in the plastic jug or add more liquid. Use the pulse function in short bursts for harder ingredients and ice.
The drink is watery and lacking flavour.	Use the pulse function in short bursts to ensure the ingredients are not over-blended.

Storage

Check that the blender is cool, clean and dry before storing in a cool, dry place.
Never wrap the cord tightly around the blender; wrap it loosely to avoid causing damage.

Specifications

Product code: EK5903P
Input: 220–240 V ~ 50–60 Hz
Output: 550 W



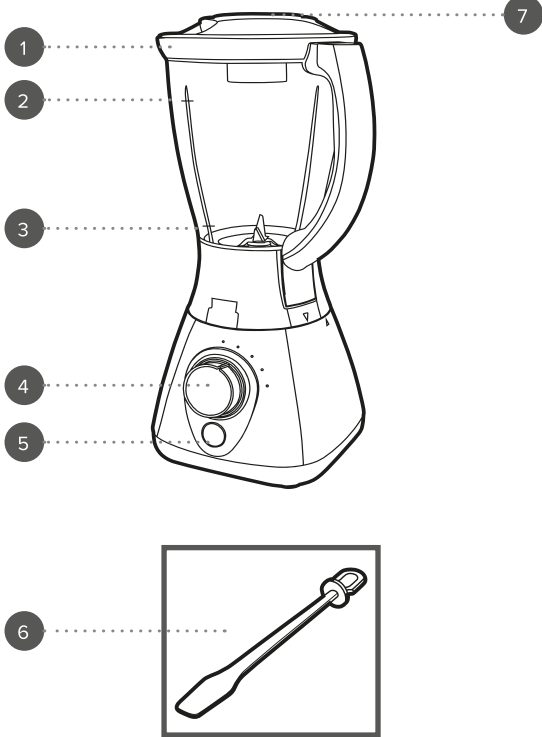
Disposal of Waste Batteries and Electrical and Electronic Equipment



This symbol on the product, its batteries or its packaging means that this product and any batteries it contains must not be disposed of with household waste. Instead, it is the user's responsibility to hand this over to an applicable collection point for the recycling of batteries and electrical and electronic equipment. This separate collection and recycling will help to conserve natural resources and prevent potential negative consequences for human health and the environment due to the possible presence of hazardous substances in batteries and electrical and electronic equipment, which could be caused by inappropriate disposal. Some retailers provide take-back services which allow the user to return exhausted equipment for appropriate disposal. **It is the user's responsibility to delete any data on electrical and electronic equipment prior to disposal.** For more information about where to drop batteries, electrical and electronic waste off, please contact the local city/municipality office, household waste disposal service, or the retailer.

User manual

Jug blender



1. Plastic jug lid

2. Max fill mark (1.5 L)

3. Min fill mark (0.25 L)

4. Speed control dial
5. Pulse function button

6. Stirrer

7. Filler lid



To register for your extended guarantee, scan the QR code or visit guarantee.upgic.com/progress and register your product within 30 days of purchase. For any further queries, visit www.progresscookshop.com.

Manufactured by:
Ultimate Products UK Ltd.,
Victoria Street, Manchester OL9 0DD. **UK.**
Ultimate Products Europe Ltd.,
19 Baggot Street Lower, Dublin DO2 X658. **ROI.**
MADE IN CHINA.
©Progress trademark. All rights reserved.
CD091023/MD000000/V1

PROGRESS®
Est. 1931

SAFETY INSTRUCTIONS

- When using electrical appliances, basic safety precautions should always be followed.
- Check that the voltage indicated on the rating plate corresponds with that of the local network before connecting the appliance to the mains power supply.
- Children aged from 8 years and people with reduced physical, sensory or mental capabilities or lack of experience and knowledge can use this appliance, only if they have been given supervision or instruction concerning use of the appliance in a safe way and understand the hazards involved.
- Children should be supervised to ensure that they do not play with the appliance.
- Unless they are older than 8 and supervised, children should not perform cleaning or user maintenance.
- This appliance is not a toy.
- If the power supply cord, plug or any part of the appliance is malfunctioning or if it has been dropped or damaged, cease using the product immediately to avoid potential injury.
- This appliance contains no user serviceable parts, only a qualified electrician should carry out repairs. Improper repairs may place the user at risk of harm.
- Keep the appliance and its power supply cord out of the reach of children.
- Keep the appliance out of the reach of children when it is switched on or cooling down.
- Keep the appliance and its power supply cord away from heat or sharp edges that could cause damage.
- Keep the power supply cord away from any parts of the appliance that may become hot during use.
- Keep the appliance away from other heat emitting appliances.
- Do not immerse the appliance in water or any other liquid.
- Do not operate the appliance with wet hands.
- Do not leave the appliance unattended whilst connected to the mains power supply.
- Do not remove the appliance from the mains power supply by pulling the cord; switch it off and remove the plug by hand.
- Do not pull or carry the appliance by its power supply cord.
- Do not use the appliance for anything other than its intended use.
- Do not use any accessories other than those supplied.
- Do not use this appliance outdoors.
- Do not store the appliance in direct sunlight or in high humidity conditions.
- Do not move the appliance whilst it is in use.
- Switch off the appliance and disconnect it from the mains power supply before changing or fitting accessories.

- Always unplug the appliance after use and before any cleaning or user maintenance.
- Always ensure that the appliance has cooled fully after use before performing any cleaning or maintenance or storing away.
- Always use the appliance on a stable, heat-resistant surface, at a height that is comfortable for the user.
- Use of an extension cord with the appliance is not recommended.
- This appliance should not be operated by means of an external timer or separate remote control system, other than that supplied with this appliance.
- This appliance is intended for domestic use only. It should not be used for commercial purposes.



WARNING: Do not touch sharp blades.

Dos and don'ts

DO:

Chop all ingredients into small pieces before blending. Add a small amount of cold liquid or reduce the quantity of the ingredients in the plastic jug if the blades are not running smoothly.

If the ingredients do not blend evenly, remove the plastic jug from the blender base unit. Shake the plastic jug to redistribute the ingredients and then blend once more.



CAUTION: Exercise caution when cleaning the blades, as they are extremely sharp.

DO NOT:

Attempt to remove the plastic jug until the blades have fully stopped moving.

Blend dry ingredients for more than 60 seconds at a time.

Dry blend ice cubes without sufficient liquid.



WARNING: Do not blend hot liquid or food. Never exceed the max. fill mark when adding ingredients to the plastic jug, as this could cause spillage and may damage the blender. The blender must not be operated when the plastic jug is empty, cracked or broken. Do not clean the plastic jug with boiling water. Do not use the stirrer whilst the blender is in use.

Care and maintenance

STEP 1: Switch off and unplug the blender from the mains power supply before performing any cleaning or user maintenance.

STEP 2: Wipe the blender base unit with a soft, damp cloth and allow to dry thoroughly.

STEP 3: Wash the plastic jug and attachments in warm, soapy water, then rinse and dry thoroughly.

Never touch the blades; using extreme caution, clean the blade attachment with a brush and dry carefully.

Never use harsh or abrasive detergents or scourers to clean the blender, as this could cause damage.



NOTE: Always clean the blender immediately after each use. The blender is not suitable for use in a dishwasher.



WARNING: Handle the plastic jug with care, as the blades are extremely sharp.

Instructions for use

Before first use

Before connecting to the mains power supply, clean blender following the instructions in the section entitled '**Care and maintenance**'.



NOTE: When using the blender for the first time, a slight smoke or odour may be emitted. This is normal and will soon subside. Allow for sufficient ventilation around the blender.

Using the blender

STEP 1: Position the blender base unit onto a flat, stable surface at a height that is comfortable for the user.

STEP 2: Place the plastic jug onto the blender base unit and twist into place until secure.

STEP 3: Chop the ingredients to be blended into pieces no larger than 2 cm and place them into the plastic jug. The filler lid can be used as a small measuring cup.

STEP 4: Pour the required amount of liquid into the plastic jug. Do not exceed the max. fill mark.

STEP 5: Fit the plastic jug lid and filler lid onto the plastic jug. Turn the lid until it locks into place. Plug in and switch on the blender at the mains power supply.

STEP 6: To blend the ingredients, turn the control dial to the desired speed setting (1–4). Press '**PULSE**' to activate pulse function and release to stop it. The pulse function provides quick bursts of speed, useful for blending more solid foods.

STEP 7: Stop blending by turning the control dial to the '0' position.

STEP 8: Switch off and unplug the blender from the mains power supply.

STEP 9: Detach the plastic jug from the blender base unit by twisting and pulling it away from the blender base unit.