

# Important safety

Please read carefully

Please retain instructions for future reference.

## SAFETY INSTRUCTIONS

- When using electrical appliances, basic safety precautions should always be followed.
- Check that the voltage indicated on the rating plate corresponds with that of the local network before connecting the appliance to the mains power supply.
- This appliance can be used by children aged from 8 years and above and persons with reduced physical, sensory or mental capabilities and knowledge, if they have been supervised/instructed and understand the hazards involved.
- Children shall not play with the appliance.
- Children should not perform cleaning or user maintenance, unless they are older than 8 and supervised.
- This appliance is not a toy.
- If the power supply cord, plug or any part of the appliance is malfunctioning or if it has been dropped or damaged, cease using the product immediately to avoid potential injury.
- This appliance contains no user serviceable parts, only a qualified electrician should carry out repairs. Improper repairs may place the user at risk of harm.
- Keep the appliance and its power supply cord out of the reach of children.
- Keep the appliance out of the reach of children when it is switched on or cooling down.
- Keep the appliance and its power supply cord away from heat or sharp edges that could cause damage.
- Keep the power supply cord away from any parts of the appliance that may become hot during use.
- Keep the appliance away from other heat emitting appliances.
- Do not allow the power supply cord to hang over worktops, touch hot surfaces or become twisted.
- Do not immerse the electrical components of this appliance in water or any other liquid.
- Do not operate the appliance with wet hands or if any connections are wet.
- If this appliance falls or accidentally becomes immersed in water, unplug it from the wall outlet immediately. Do not reach into the water.
- Do not leave the appliance unattended whilst connected to the mains power supply.
- Do not remove the appliance from the mains power supply by pulling the cord; switch it off and remove the plug by hand.
- Do not pull or carry the appliance by its power supply cord.
- Do not use the appliance for anything other than its intended use.
- Do not use any accessories other than those supplied.
- Do not use any damaged accessories.
- Do not use this appliance outdoors.
- Do not store the appliance in direct sunlight or in high humidity conditions.
- Do not move the appliance whilst it is in use.
- Do not touch any moving parts on this appliance during use, as this could cause injury.
- Do not touch any sections of the appliance that may become hot during use, as this could cause injury.
- Always unplug the appliance after use and ensure it has cooled fully before any cleaning, user maintenance or storing away.
- Always use the appliance on a stable, heat-resistant surface, at a height that is comfortable for the user.
- Use of an extension cord with the appliance is not recommended.
- This appliance should not be operated by means of an external timer or separate remote control system.
- This appliance is intended for domestic use only. It should not be used for commercial purposes.



**CAUTION:** Keep hands, fingers, hair and any loose clothing away from the rotating tools of the appliance.



**WARNING:** Do not touch sharp blades.



**NOTE:** If the blades are not running smoothly, stop the food processor and carefully remove the stainless steel blade attachment. Add a small amount of cold liquid or reduce the quantity of the ingredients in the mixing bowl.



**CAUTION:** Do not blend warm or hot liquid or food, as this may cause a pressure build-up and, in turn, serious injury.



**WARNING:** Do not operate for long periods of time. Max. operation time is 45 seconds; allow the food processor to cool for 1 minute before using again. Using the food processor for longer than 45 seconds at a time will cause the temperature to increase, which may lead to a pressure build-up. If this happens, switch off, and unplug the food processor from the mains power supply and allow it to cool thoroughly before attempting to remove the stainless steel blade attachment. Do not immerse the mixing bowl in cold water at this time.

## Troubleshooting

Problem	Possible cause	Solution
The food processor will not operate.	The food processor is not connected to the mains power supply.	Plug in and switch on the food processor at the mains power supply.
	The food processor is not correctly assembled.	Check that all of the components are in place properly.

## Storage

Reassemble the food processor.

Check that the food processor is cool, clean and dry before storing in a cool, dry place.

Never wrap the cord tightly around the food processor; wrap it loosely to avoid causing damage.

## Specifications

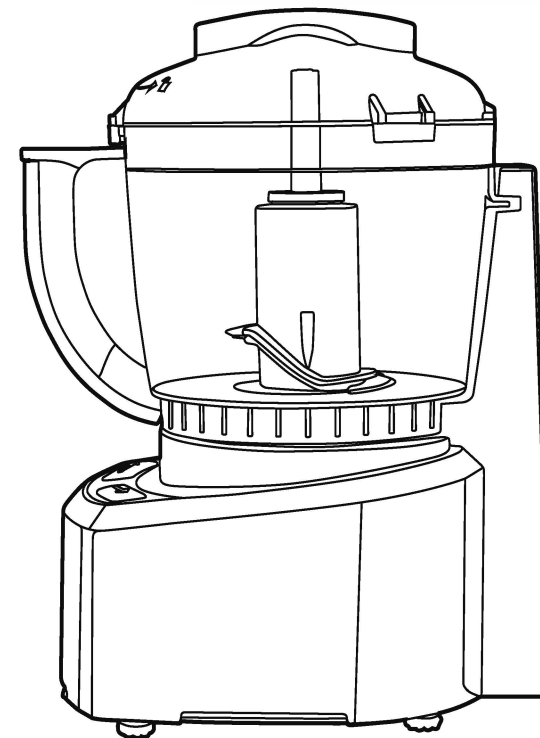
Product code: EK3171

Operating voltage: 220–240 V ~ 50/60 Hz

Power: 200 W

# User manual

Food processor



To register for your extended guarantee, scan the QR code or visit [guarantee.uppic.com/progress](http://guarantee.uppic.com/progress) and register your product within 30 days of purchase. For any further queries, visit [www.progresscookshop.com](http://www.progresscookshop.com).

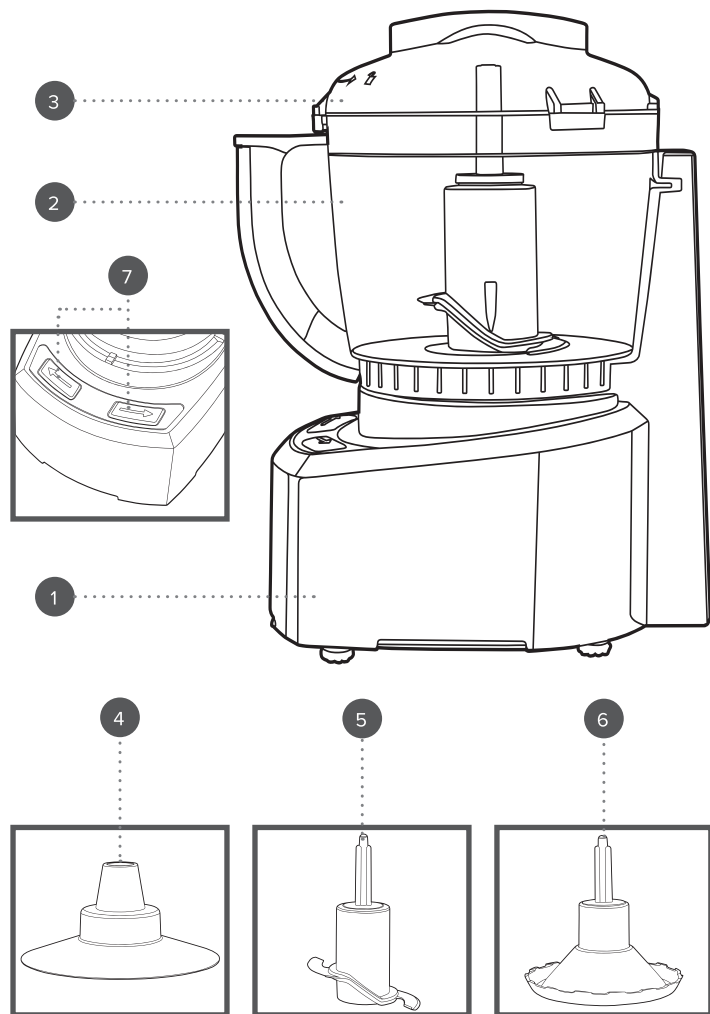
Manufactured by:  
Ultimate Products UK Ltd.,  
Victoria Street, Manchester OL9 0DD. **UK.**  
Ultimate Products Europe Ltd.,  
19 Baggot Street Lower, Dublin D02 X658. **ROI.**

**MADE IN CHINA.**  
©Progress trademark. All rights reserved.  
CD040425/MD000000/V1

**PROGRESS®**  
Est. 1931

## Description of parts

1. Food processor base unit
2. Mixing bowl
3. Mixing bowl lid
4. Whipping disc
5. Stainless steel blade attachment
6. Spacer
7. Multidirectional buttons



Please retain instructions for future reference.

## Dos and don'ts

### DO:

Be careful if hot liquid is poured into the food processor, as it can be ejected out of the food processor due to sudden steaming. Switch off the food processor and disconnect it from the mains power supply before changing or fitting attachments. Switch off the food processor and disconnect it from the mains power before attempting to remove any food from the chopping bowl and before cleaning.

Check that the food processor is fully assembled before using.

Chop all ingredients into small pieces before blending.

Add a small amount of cold liquid or reduce the quantity of the ingredients in the mixing bowl if the blades are not running smoothly.

### DON'T:

Dry blend ingredients; always add a small amount of liquid.

Use attachments or cutting/rotating blades if they are loose, damaged or broken.

Use the chopping bowl if it is cracked or broken.

Operate the food processor when the chopping bowl is empty, as this will cause damage.

Attempt to remove the stainless steel blade attachment until the blades have fully stopped moving.

## Care and maintenance

**STEP 1:** Switch off and unplug the food processor from the mains power supply before performing any cleaning or user maintenance.

**STEP 2:** Wipe the main unit with a soft, damp cloth and allow to dry thoroughly.

**STEP 3:** Wash all of the accessories in warm, soapy water, then rinse and dry thoroughly.

Do not immerse the main unit or lid in water or any other liquid. Do not use harsh or abrasive detergents or scourers to clean the food processor, as this could cause damage.

Never touch the blades; the attachments should be washed using a brush and dried carefully.



**NOTE:** The food processor should be cleaned after every use. The main unit and all accessories are not safe for dishwasher use.



**WARNING:** Handle the attachments with care, as the blades are sharp. Exercise caution when attaching, removing, cleaning or storing the attachments.

## Instructions for use

### Before first use

Before connecting to the mains power supply, clean the food processor following the instructions in the section entitled 'Care and maintenance'.



**NOTE:** When using the food processor for the first time, a slight odour may be emitted. This is normal and will soon subside. Allow for sufficient ventilation around the food processor.

### Assembling the food processor

**STEP 1:** Before connecting to the mains power supply, position the food processor base unit onto a flat, stable surface, at a height that is comfortable for the user.

**STEP 2:** Place the mixing bowl onto the food processor base unit and twist in an anticlockwise direction until it locks into place.

### Choosing an attachment

**Blades:** This stainless steel blade attachment can be used for shredding, chopping, grinding and blending.

**Whipping disc:** This attachment can be used for stirring, whipping, kneading and mixing.

Position the chosen attachment onto the shaft in the centre of the mixing bowl and press it firmly downwards until it locks into place.

**Spacer:** This attachment is an optional attachment that can be secured over the stainless steel blade attachment or the whipping disc after ingredients have been added. The spacer should be used when blending a small amount of ingredients or for finer processing.



**NOTE:** Use the clockwise multidirectional button to mix, blend, stir and whip. Use the anticlockwise multidirectional button to shred, chop, grind and blend.

### Using the food processor

**STEP 1:** After choosing an attachment, add the ingredients to the mixing bowl, taking care not to exceed the max. fill mark.

**STEP 2:** Place the mixing bowl lid on top of the mixing bowl and turn it in an anticlockwise direction to secure into place.

**STEP 3:** Plug in and switch on the food processor at the mains power supply.

**STEP 4:** Press and hold the desired multidirectional button until the foodstuffs reach the desired consistency.

**STEP 5:** Once finished, switch off and unplug the food processor.

**STEP 6:** Turn the mixing bowl in a clockwise direction and lift away from the food processor.